



## ***cms2Tg* /+(AB) (CZRC catalog ID: CZ223)**

### **Nature of the transgene**

The *cms2Tg* allele is a transgenic zebrafish line *TgBAC(cyp1a:NLS-EGFP)* with green fluorescent protein expression in the skin, otic vesicle, vasculature, cloaca, pectoral fin bud, neuromasts and liver, which almost parallels endogenous expression pattern of *cyp1a* at 30 hpf.

### **Genotyping assay**

Genotyping of the *cms2Tg* allele is based on the fluorescent microscope. As identified by fluorescent microscope, the GFP fluorescence signal is detectable at 32 hpf.

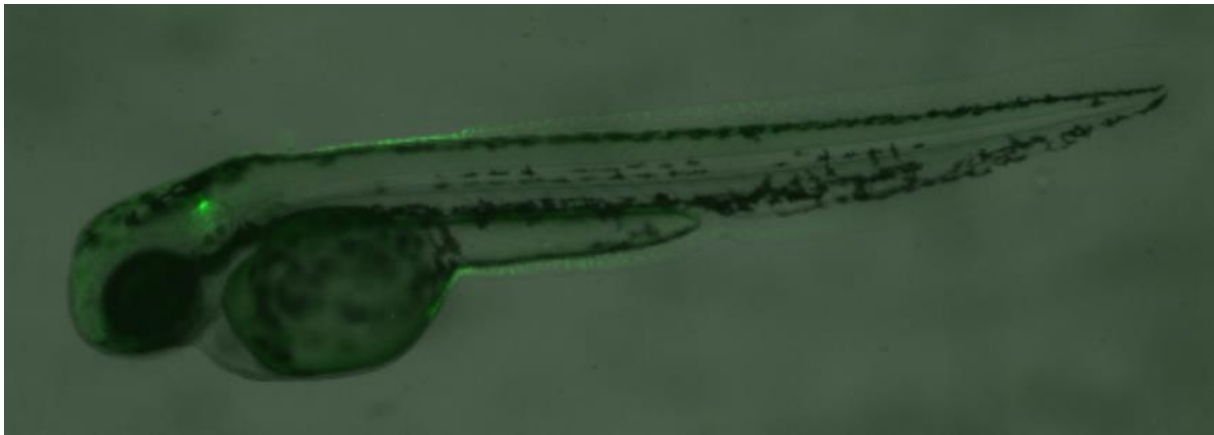


Figure. GFP expression in the lateral line at 72 hpf in *cms2Tg* line. The figure shows the lateral view of *cms2Tg* embryos at 72 hpf.

### **Reference**

Kim, K.H., Park, H.J., Kim, J.H., Kim, S., Williams, D.R., Kim, M.K., Jung, Y.D., Teraoka, H., Park, H.C., Choy, H.E., Shin, B.A., and Choi, S.Y. (2013) *Cyp1a* reporter zebrafish reveals target tissues for dioxin. *Aquatic toxicology* (Amsterdam, Netherlands). 134-135C:57-65.

