

CZ82: *zf147Tg*/+(AB)

Nature of the transgene

The *zf147Tg* allele was generated by random integration of pT2(apoeb:lynEGFP) construct.

Genotyping assay

1. Genotyping of the *zf147Tg* allele is based on the fluorescent microscope. As identified by fluorescent microscope, the GFP fluorescence signal is detectable in neuron.

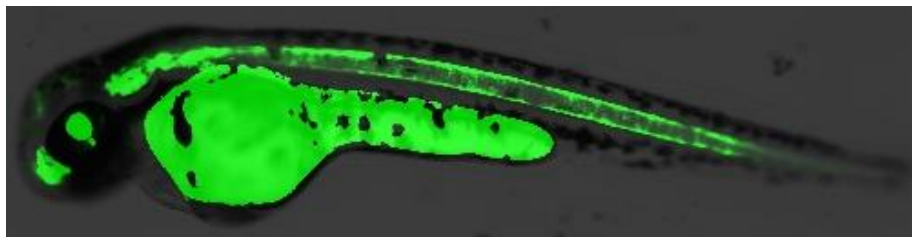


Figure. GFP expression in neuron at 2dpf in *zf147Tg* line.