

CZ76:um13Tg/+(AB)

Nature of the transgene

The *um13Tg* allele was generated by random integration of pT2(*fli1a.ep:DsRedEx*) construct.

Genotyping assay

1. Genotyping of the *um13Tg* allele is based on the fluorescent microscope. As identified by fluorescent microscope, the DsRedEx fluorescence signal is detectable in ventral mesoderm.

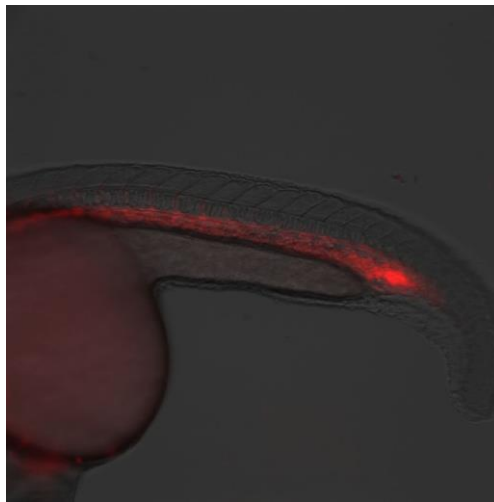


Figure. DsRedEx expression in ventral mesoderm at 1dpf in *um13Tg* line.