

# Endothelin B Receptor (JM74-10)

rev. 02/22/17

Cat#: ET1703-79

**Product Type:** Recombinant rabbit monoclonal IgG, primary antibodies

**Species reactivity:** Human

**Applications:** WB, IP

**Molecular Wt.:** 50 kDa

**Clone number:** JM74-10

**Description:** Endothelin receptor B (ETBR), also known as EDNRB, ETB, ETRB, HSCR and HSCR2, is a member of the guanine-binding, regulatory protein-coupled receptor family. Three isoforms of ETBR exist called isoform 1, isoform 2 and  $\delta$  3. ETBR is involved in the regulation of sodium excretion and glomerular filtration rate (GFR). ETBR plays a role in the normal development of the neural crest-derived cell lineages, epidermal melanocytes and enteric neurons. ETBR is expressed in lung, kidney, placenta, skeletal muscle and stem villi vessels. Both of the ET receptors, ETAR and ETBR, are activated by ET1, which results in inhibition of active lens sodium-potassium transport. Activation of the ET receptors also causes an increase in cytoplasmic calcium concentration in cultured lens epithelial cells. ETBR deficiency causes early onset dysfunction of the kidney, characterized by reduced sodium excretion, decreased GFR and slightly elevated blood pressure. Mutations in the gene encoding ETBR produce congenital aganglionic megacolon and pigment abnormalities. The multigenic disorder, Hirschsprung's disease type 2, is also due to a mutation in the ETBR gene.

**Immunogen:**

Recombinant protein.

**Positive control:**

JAR, Raji.

**Subcellular location:**

Cell membrane.

**Database links:**

SwissProt: P24530 (Human)

**Recommended Dilutions:**

**WB:** 1:500-1:2,000

**IP:** 1:10-1:50

**Storage Buffer:**

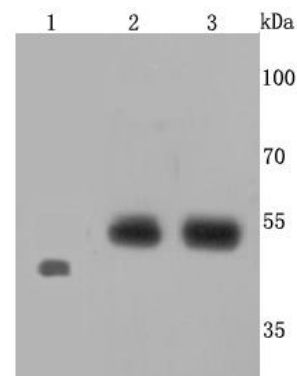
1\*TBS (pH7.4), 1%BSA, 40%Glycerol. Preservative: 0.05% Sodium Azide.

**Storage Instruction:**

Store at +4° C after thawing. Aliquot store at -20° C or -80° C. Avoid repeated freeze / thaw cycles.

**Purity:**

ProA affinity purified.



**Fig1:** Western blot analysis of Endothelin B Receptor on different cells lysates using anti-Endothelin B Receptor antibody at 1/500 dilution.

**Positive control:**

**Lane 1: Zebrafish**

**Lane 2: Raji**

**Lane 3: JAR**

**Background References**

1. Tagashira H et al. UVB Stimulates the Expression of Endothelin B Receptor in Human Melanocytes via a Sequential Activation of the p38/MSK1/CREB/MITF Pathway Which Can Be Interrupted by a French Maritime Pine Bark Extract through a Direct Inactivation of MSK1. *PLoS One* 10:e0128678 (2015).
2. Hall SM et al. Endothelin receptor expression in idiopathic pulmonary arterial hypertension: effect of bosentan and epoprostenol treatment. *Eur Respir J* 38:851-60 (2011).

Hangzhou HuaAn Biotechnology Co.,Ltd.

Orders: 0086-571-88062880

Support: 0086-571-89986345

Service mail: tech@huabio.com

www.huabio.com



华安生物

Applications: WB=Western blot IP=Immunoprecipitation IHC=Immunohistochemistry IF=Immunofluorescence FC=Flow cytometry  
Species Cross-Reactivity: H=human M=mouse R=rat Hm=hamster Mk=monkey Mi=mink C=chicken Dm=D.melanogaster X=Xenopus Z=zebrafish  
B=bovine Dg=dog Pg=pig Sc=S.