

Actin(JF47-01)

rev. 01/21/17
Cat#: ET1702-52

Product Type: Recombinant rabbit monoclonal IgG, primary antibodies

Species reactivity: Human, Mouse, Rat, Zebra fish

Applications: WB, IP

Molecular Wt.: 42 kDa

Clone number: JF47-01

Description: All eukaryotic cells express Actin, which often constitutes as much as 50% of total cellular protein. Actin filaments can form both stable and labile structures and are crucial components of microvilli and the contractile apparatus of muscle cells. While lower eukaryotes, such as yeast, have only one Actin gene, higher eukaryotes have several isoforms encoded by a family of genes. At least six types of Actin are present in mammalian tissues and fall into three classes. α -Actin expression is limited to various types of muscle, whereas β -Actin and γ -Actin are the principle constituents of filaments in other tissues. Members of the small GTPase family regulate the organization of the Actin cytoskeleton. Rho controls the assembly of Actin stress fibers and focal adhesion. Rac regulates Actin filament accumulation at the plasma membrane. Cdc42 stimulates formation of filopodia.

Immunogen:

Recombinant protein.

Positive control:

PC-12, NIH/3T3, HeLa, Zebra fish.

Subcellular location:

Cytoplasm.

Database links:

SwissProt: P68133 (Human) P68134 (Mouse) P68136 (Rat)

Recommended Dilutions:

WB: 1:5,000-1:10,000 **IP:** 1:50-1:200

Storage Buffer:

1*TBS (pH7.4), 1%BSA, 40%Glycerol. Preservative: 0.05% Sodium Azide.

Storage Instruction:

Store at +4° C after thawing. Aliquot store at -20° C or -80° C. Avoid repeated freeze / thaw cycles.

Purity:

ProA affinity purified.

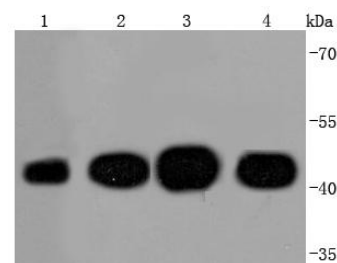


Fig1: Western blot analysis of Actin on different lysates using anti-Actin antibody at 1/1,000 dilution.

Positive control:

Lane 1: Zebra fish

Lane 2: HeLa

Lane 3: PC-12

Lane 4: NIH/3T3

Background References

1. Moilanen AM et al. WDR12, a Member of Nucleolar PeBoW-Complex, Is Up-Regulated in Failing Hearts and Causes Deterioration of Cardiac Function. PLoS One 10:e0124907 (2015).
2. Tamaki T et al. Therapeutic isolation and expansion of human skeletal muscle-derived stem cells for the use of muscle-nerve-blood vessel reconstitution. Front Physiol 6:165 (2015).

Hangzhou HuaAn Biotechnology Co.,Ltd.

Orders: 0086-571-88062880

Support: 0086-571-89986345

Service mail: tech@huabio.com

www.huabio.com



华安生物

Applications: WB=Western blot IP=Immunoprecipitation IHC=Immunohistochemistry IF=Immunofluorescence FC=Flow cytometry
Species Cross-Reactivity: H=human M=mouse R=rat Hm=hamster Mk=monkey Mi=mink C=chicken Dm=D.melanogaster X=Xenopus Z=zebrafish
B=bovine Dg=dog Pg=pig Sc=S.