

Cyclin D1

Cat#: 0407-27

Quantity: 100ul

Product Type	Rabbit Polyclonal IgG, primary antibodies		
Product Lot#	R080925		
Species Cross-reactivity	Mouse, Rat, Human	Project ID	PK004
Tested Applications	WB	Form	Liquid
Positive control	MCF-7	Concentration	0.5mg/ml
Cellular Localization	Cytoplasm	Molecular Wt.	36kDa
Database links	SwissProt P25322		

Description: Cyclin D1 belongs to the family of cyclin proteins which function as the regulatory subunits of cyclin/cyclin dependent kinase holoenzymes. The cyclin D1 proto-oncogene is an important regulator of G1 to S-phase transition and an important cofactor for several transcription factors in numerous cell types. Cyclin D1 is known to modulate local chromatin structure and transcription of genes involved in proliferation and differentiation through CDK-independent association with histone acetylases and deacetylases.

Specificity/Source: This antibody is produced by immunizing rabbits with a synthetic peptide (KLH-coupled) corresponding to a region of C-terminal residues of cyclin D1.

Recommended Dilutions:

WB: 1:5,000

Storage Buffer: 1*TBS (pH7.4), 0.5%BSA, 25%Glycerol. Preservative: 0.05% Sodium Azide.

Storage Instruction: Store at +4°C after thawing. Aliquot store at -20°C or -80°C. Avoid repeated freeze / thaw cycles.

Purity: Immunogen affinity purified

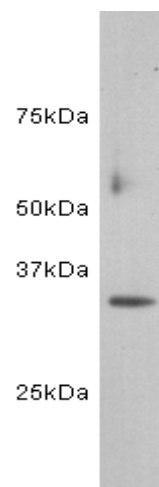
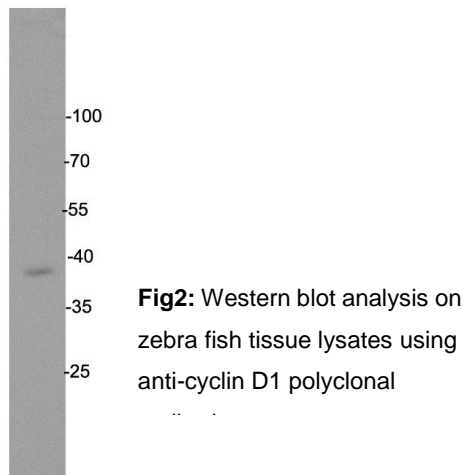


Fig1: Western blot analysis on MCF-7 using anti-cyclin D1 polyclonal antibody



Background References:

1. Donnellan R, Chetty R. Cyclin D1 and human neoplasia. *J Clin Pathol: Mol Part*,1998,51:1-7.
2. Bates S,Peters G.Cyclin D1 as a cellular proto-oncogen (J). *Cancer Biol*,1995,6:73
3. Fantl B,Brollkes S,Smith R,et al.Characterization of the proto-oncogene int-2 and ints potential for the diagnosis of human cancer (J) .*Cancer Cells*,1989,7:283