

***La4Tg*/+ (AB) (CZRC catalog ID: CZ70)**

**Nature of the mutation**

*La4Tg* is generated by random integration of a RFP-containing construct, expresses RFP in heart and blood vessels (Huang, Zhang et al. 2005).

**Genotyping assay**

1. Genotyping of the *la4Tg* allele is based on the fluorescent microscope. As identified by fluorescent microscope, the RFP fluorescence signal is detectable at 3 dpf.

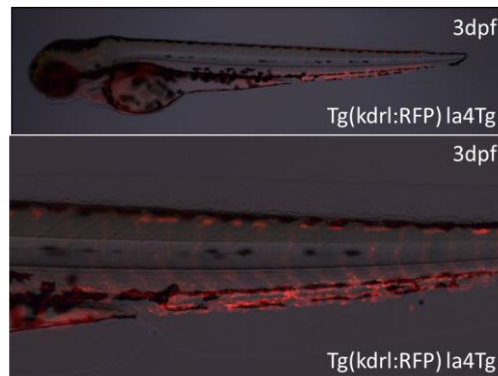


Figure. The *la4Tg* line expresses RFP in blood vessels at 3 dpf. The figure shows the lateral view of *la4Tg* embryos at 3 dpf.

2. Genotyping of the *la4Tg* line can also be performed via allele-specific PCR using dsRed2-specific primers (Sense primer: GAGAACGTCATCACCGAGT, antisense primer: ATGGACTTGA ACTCCACCAG, the length of PCR fragment is 527 bp).

**Reference**

Huang, H. G., B. Zhang, et al. (2005). "NXT2 is required for embryonic heart development in zebrafish." Bmc Developmental Biology 5.